

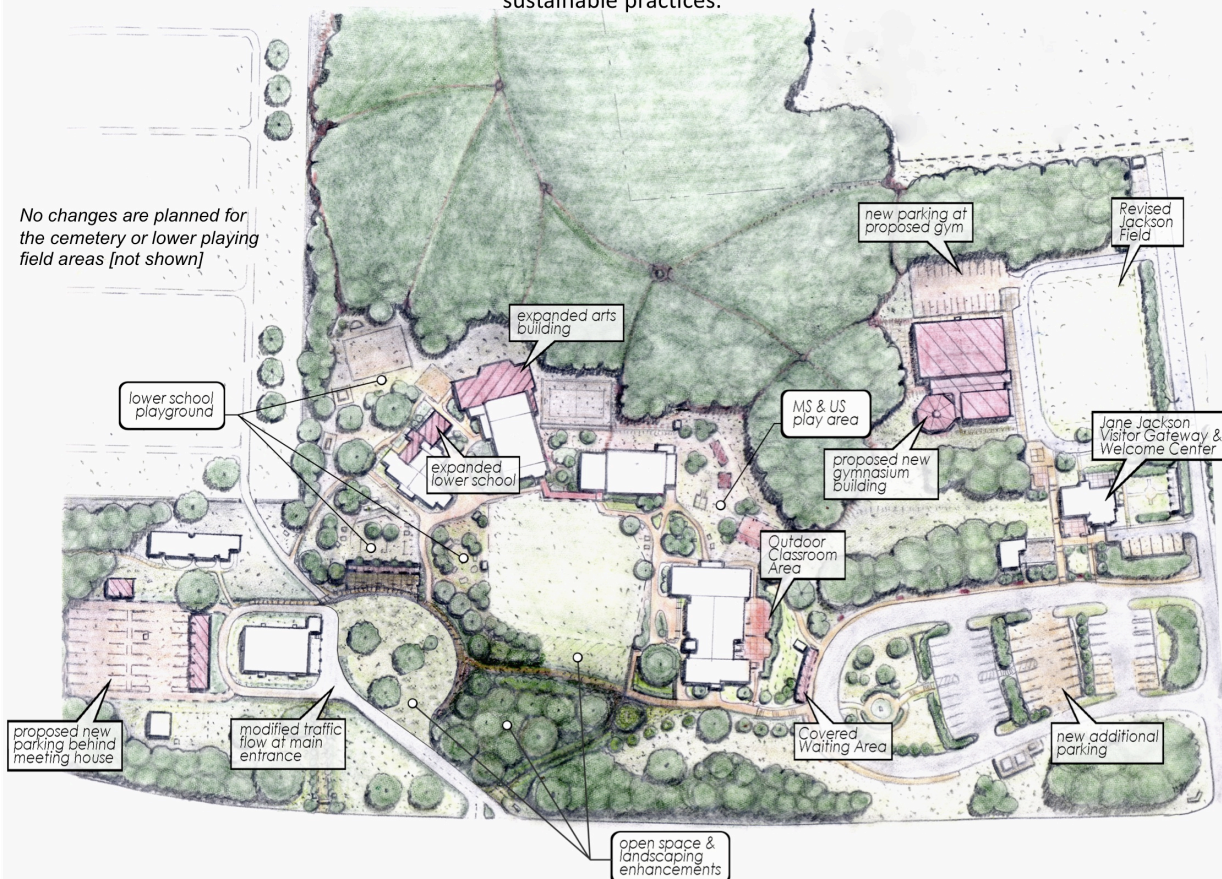
The campus master plan articulates the vision for the future use of the land and property resources of Buckingham Friends.
This land use plan will guide campus improvement and development decisions during the next ten years.

GUIDING PRINCIPLES

- Respect and reflect Quaker testimonies
- Embrace campus woodlands
- Focus on a pedestrian oriented campus that supports peace, stillness & reflection
- Integrate past, present and future traditions
- Promote community and engagement
- Develop in a sustainable and regenerative manner

MASTER PLAN OVERVIEW

- Implement a new pedestrian and vehicular circulation pattern and create a new gateway to the campus.
- Develop an educational and community center with construction of a new gym/health and fitness center.
- Redefine & enhance the historic campus area to include relocation of the carriage shed.
- Complete central campus educational arc including modifications & addition to the lower school.
- Enhance central campus educational arc with improvements and expansion to Arts building, new covered entry, upper school and upper field pedestrian landscaping.
- Enhance open space utilization, integrate campus wide environmental educational activities and introduce regenerative design, development and sustainable practices.



This is a conceptual visualization of the plan for future land use of the campus of Buckingham Friends. Implementation of the master plan will be done over time, in phases, directed by budgets, architectural designs, site plans, and input from the Buckingham Friends community.

Buckingham Friends School seeks to incorporate sustainability practices in its next decade of changes and development. Projects shall utilize green construction practices in a holistic approach which integrates water conservation, organic landscaping, and resource management strategies. Changes to pedestrian and vehicular circulation will encourage physical fitness and enhance the natural beauty, peace and stillness of the site. Community focused upgrades will encourage creative play, family activities, and opportunities for social gatherings, worship, discourse and engagement.